

BUILDING DATA														
PROJECT DESCRIPTION		BUILDING OCCUPANCY					BUILDING DESCRIPTION						FIRE ALARM SYSTEM FEATURES	
	NEW BUILDING	X	ASSEMBLY GROUP A (A1,A2,A3,A4 AND A5)			RESIDENTIAL GROUP R (R1&R2)	1	TOTAL NUMBER OF LEVELS		ATRIUM		STAIR PRESSURIZATION		NON-VOICE EVACUATION
	FIRE ALARM SYSTEM UPGRADE	X	BUSINESS GROUP B			STORAGE GROUP S (S1 AND S2)	1	ABOVE GROUND LEVELS	GRND	FIRE DEPARTMENT ACCESS		POST FIRE SMOKE PURGE		VOICE EVACUATION
	LIFE SAFETY SYSTEM UPGRADE		EDUCATIONAL GROUP E			UTILITY AND MISCELLANEOUS GROUP U	0	BELOW GROUND LEVELS		FULLY SPRINKLERED		GENERATOR		PARTIAL/SELECTIVE EVACUATION
X	RENOVATION		FACTORY INDUSTRIAL GROUP F (F1 AND F2)			OTHER:	0	NUMBER OF ELEVATOR BANKS		PARTIALLY SPRINKLERED		FIRE PUMP	X	GENERAL EVACUATION
	EMERGENCY REPAIR		HIGH-HAZARD GROUP H (H1,H2,H3,H4 AND H5)				0	NUMBER OF EGRESS STAIRS	X	NON-SPRINKLERED		OTHER:		DIGITAL ALARM COMMUNICATOR
	TENANT ADDITION		INSTITUTIONAL GROUP I (I1,I2 AND I3)				X	LOW RISE BUILDING		PRE-ACTION SPRINKLER		OTHER:		PRE-SIGNAL SYSTEM
	OTHER:		MERCANTILE GROUP M					HIGH RISE BUILDING						FIRE FIGHTER'S TELEPHONE SYSTEM

FIRE ALARMNOTES:

1. ALL EQUIPMENT AND WIRING INDICATED ON THESE PLANS IS NEW (U.O.N.).
2. PROVIDE WIRING AS REQUIRED BETWEEN ALL DEVICES AND EQUIPMENT AS REQUIRED TO PERFORM FIRE ALARM SYSTEM FUNCTIONS.
3. CABLES SHALL BE ADEQUATELY SUPPORTED AND INSTALLED SUCH THAT MAXIMUM PROTECTION AGAINST PHYSICAL DAMAGE IS AFFORDED BY BUILDING CONSTRUCTION SUCH AS BASEBOARDS, DOOR FRAMES, LEDGES, AND SO FORTH.
4. ALL STROBES AND HORN/STROBES SHALL BE CEILING MOUNTED FINISH BY ARCHITECT, APPROVED FOR USE IN AHJ.
5. ALL DUCT SMOKE DETECTORS INSTALLED IN HUNG CEILING AREA AND IN OUT OF SIGHT AREA SHALL HAVE REMOTELY INSTALLED STATUS INDICATOR LAMPS. COORDINATE EXACT LOCATION WITH ARCHITECT AND GENERAL CONTRACTOR.
6. FOR LOCATIONS AND QUANTITIES OF DEVICES REFER TO FIRE ALARM FLOOR PLANS. WHERE THERE ARE DISCREPANCIES BETWEEN THE PLANS AND THE RISER DIAGRAM, THE GREATER QUANTITY SHALL BE USED.
7. CONTRACTOR SHALL VERIFY ALL WIRING WITH FIRE ALARM VENDOR AND OBTAIN WIRING DIAGRAMS BEFORE PROCEEDING WITH THE START OF ANY WORK.
8. ALL WIRING SHALL BE IN ACCORDANCE WITH THE AHJ ELECTRICAL CODE 760.179(D).
9. PROVIDE FAN SHUT DOWN CAPABILITY FOR FANS WITH A RATING LARGER THAN 2,000 CFM. SHUT DOWN SHALL BE ACCOMPLISHED BY ONE OR MORE OUTPUT CONTROL POINTS FROM THE FIRE ALARM SYSTEM TO RELAYS FOR SHUTDOWN. PROVIDE CONTROL AND MONITORING FOR ALL RELAYS. PROVIDE POWER, CONTROL RELAYS, MONITORING AND WIRING FOR ALL FIRE/SMOKE DAMPERS.
10. DUCT DETECTORS SHALL BE FURNISHED AND INSTALLED BY THE ELECTRICAL CONTRACTOR ALONG WITH FURNISHING OF THE SAMPLING TUBES. DUCTWORK MODIFICATIONS AND INSTALLATION OF SAMPLING TUBES SHALL BE BY THE MECHANICAL CONTRACTOR. FOR FANS RATED LARGER THAN 2,000 CFM PROVIDE DUCT DETECTORS IN SUPPLY AND RETURN DUCTWORK.
11. PROVIDE ALL REQUIRED EXPANSION PANELS, PC BOARDS, POWER SUPPLIES, BATTERIES, FUSE CUTOUTS AND BRANCH CIRCUITS, ETC, FOR A COMPLETE AND OPERATIONAL FIRE ALARM SYSTEM.
12. STROBES AND HORNS SHALL BE WIRED ON ALTERNATING A-B CIRCUITING IN ALL AREAS, AS INDICATED ON THE RISER DIAGRAM.

13. CONTRACTOR SHALL PERFORM ALL AHJ BUILDING DEPT. FILINGS AND OBTAIN ALL APPROVALS. CONTRACTOR SHALL OBTAIN ALL REQUIRED SIGNED & SEALED AHJ BUILDING DEPT. FORMS AND ALL REQUIRED SETS OF DRAWINGS FROM ENGINEER OF RECORD AND BUILDING DEPT. EXPEDITOR.
14. UPON COMPLETION OF INSTALLATION THE SYSTEM SHALL BE 100% PRE-TESTED BY THE FIRE ALARM VENDOR AND THE LICENSED ELECTRICAL CONTRACTOR PRIOR TO FIRE DEPARTMENT INSPECTION.
15. CONTRACTOR SHALL SUBMIT TO THE ENGINEER A MARKUP OF FA DRAWINGS INDICATING "AS-BUILT" CONDITIONS FOR ENGINEER'S REFERENCE. IN PREPARING "AS-BUILT" DRAWINGS FOR FILING, CONTRACTOR SHALL SIGN "AS-BUILT" STATING A FUNCTIONAL TEST HAS BEEN CONDUCTED OF THE FIRE ALARM SYSTEM AND THE SYSTEM OPERATES AS DESIGNED AND IN ACCORDANCE WITH THE INPUT/OUTPUT PROGRAMMING MATRIX.

FIRE ALARM DRAWING LIST

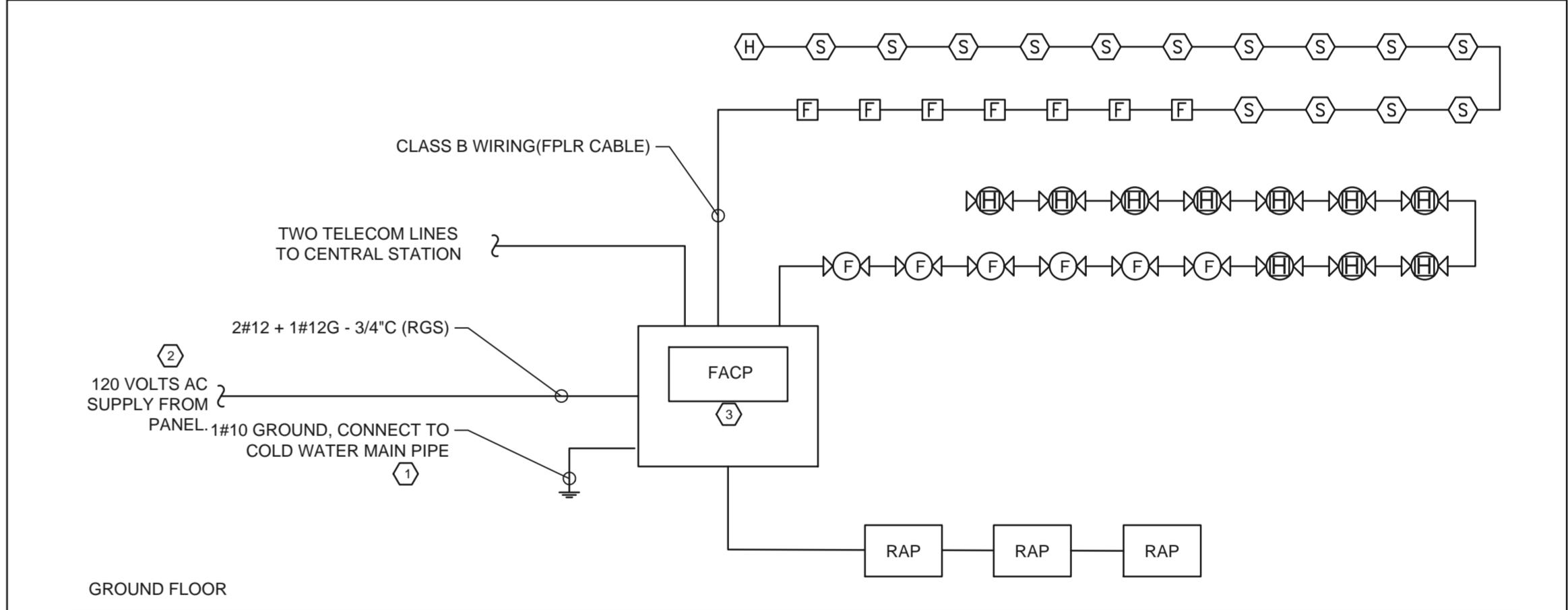
FA-0.1 FIRE ALARM NOTES, RISER, SYMBOLS, AND ABBREVIATIONS

FA-1.0 FIRE ALARM PLAN

SYSTEM OUTPUTS INITIATING DEVICES		SYSTEM OUTPUTS INDICATING/CONTROLLED DEVICES		CONTROL UNIT ANNUNCIATION					NOTIFICATION					REQUIRED FIRE SAFETY CONTROL		
				ACTIVATE COMMON ALARM SIGNAL INDICATOR ON LCD OF FIRE ALARM CONTROL PANEL & OUTLYING ANNUNCIATORS	ACTIVATE COMMON SUPERVISORY SIGNAL INDICATOR ON LCD OF FIRE ALARM CONTROL PANEL & OUTLYING ANNUNCIATORS.	ACTIVATE COMMON TROUBLE SIGNAL INDICATOR ON LCD OF FIRE ALARM CONTROL PANEL & OUTLYING ANNUNCIATORS.	SOUND INTERNAL BUZZER AT FIRE ALARM CONTROL PANEL & OUTLYING ANNUNCIATORS.	TEXT MESSAGE DISPLAY DEVICE TYPE & LOCATION OF THE ACTIVATING DEVICES ON LCD OF FIRE ALARM CONTROL PANEL & OUTLYING ANNUNCIATORS.	ACTIVATE EVACUATION SIGNAL THROUGH LOUDSPEAKERS AND FLASH THE STROBES ON ALARM FLOOR, FLOOR ABOVE & FLOOR BELOW.	TRANSMIT "MANUAL" ALARM SIGNAL TO FIRE DEPARTMENT VIA AN APPROVED CENTRAL STATION MONITORING COMPANY.	TRANSMIT "SMOKE/HEAT" ALARM SIGNAL TO FIRE DEPARTMENT VIA AN APPROVED CENTRAL STATION MONITORING COMPANY.	TRANSMIT "SUPERVISORY" ALARM SIGNAL TO FIRE DEPARTMENT VIA AN APPROVED CENTRAL STATION MONITORING COMPANY.	TRANSMIT "TROUBLE" ALARM SIGNAL TO FIRE DEPARTMENT VIA AN APPROVED CENTRAL STATION MONITORING COMPANY.	DURING PERIODS WHEN NOT USED BY THE PUBLIC AS AN ASSEMBLY OCCUPANCY, SOUND STANDARD ALARM SIGNAL AND FLASH VISIBLE SIGNALS(STROBES) THROUGHOUT THE COVERED AREA.	DURING PERIODS WHEN USED BY THE PUBLIC AS AN ASSEMBLY OCCUPANCY, INITIATE A PRE-SIGNAL AT THE FACP. LIVE VOICE ANNOUNCEMENTS SHALL BE MADE UTILIZING FA SPEAKERS FOR THE PURPOSE OF COMMUNICATING INSTRUCTIONS AND/OR DIRECTING ACTIONS TO BE TAKEN, PER BC 907.2.1	RELEASE ALL ELECTRICALLY HELD OPEN FIRE & SMOKE DOORS.
		A	B	C	D	E	G	H	I	K	L	M	N	S	X	
1	MANUAL PULL STATION	●			●	●	●	●				●	●	●	●	1
2	AREA SMOKE DETECTOR	●			●	●	●		●			●	●	●	●	2
3	HEAT DETECTOR	●			●	●	●		●					●	●	3
4	FIRE ALARM AC POWER FAILURE			●	●	●					●					4
5	FIRE ALARM SYSTEM LOW BATTERY			●	●	●					●					5
6	OPEN CIRCUIT			●	●	●					●					6
7	GROUND CIRCUIT			●	●	●					●					7
8	NOTIFICATION APPLIANCE CIRCUIT SHORT			●	●	●					●					8
NOTE: AA = SEE FLOOR PLANS FOR LOCATIONS OF ANNUNCIATOR PANEL(S) BB = EXCEPT FOR FAN DISCHARGE & FAN EXHAUST DETECTORS CC = ALARM VERIFICATION ONLY (1ST ALARM)																

ABBREVIATIONS

AFF	ABOVE FINISHED FLOOR
C	CONDUIT
E	EXISTING
E.C.	ELECTRICAL CONTRACTOR
EL	EXISTING TO BE LOWERED
EMT	ELECTRIC METALLIC TUBING
ER	EXISTING TO BE RELOCATED
FA	FIRE ALARM
FCS	FIRE COMMAND STATION
FACP	FIRE ALARM CONTROL PANEL
FDS	FUSED DISCONNECT SWITCH
G	GROUND
HC	HUNG CEILING
N	NEW
NE	NEW TO REPLACE EXISTING
NTS	NOT TO SCALE
R	REMOVE
RE	RELOCATED EXISTING
RGS	RIGID GALVANIZED STEEL
RP	RELOCATED POSITION
UON	UNLESS OTHERWISE NOTED
W	WIRE
WP	WEATHERPROOF



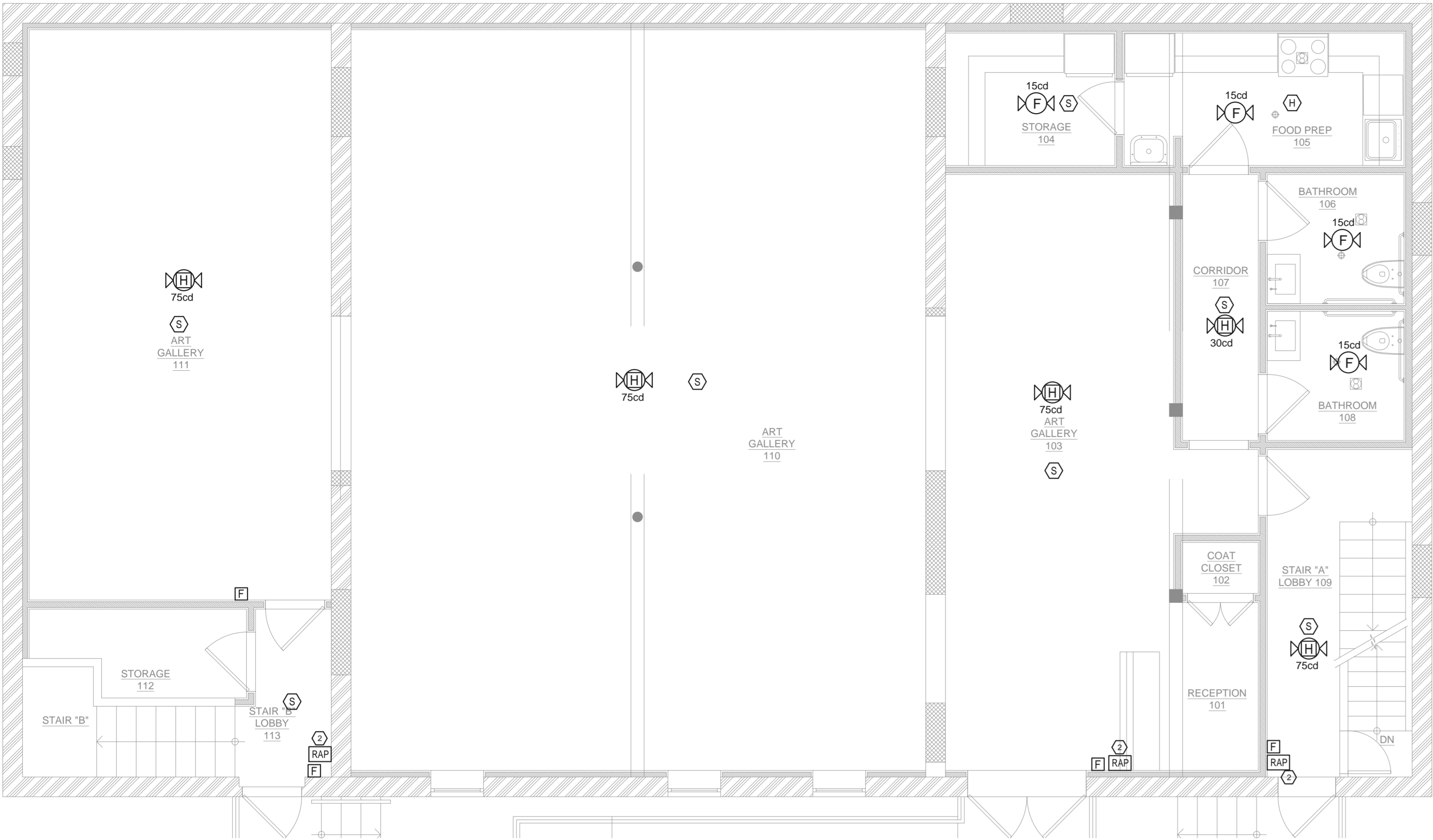
FIRE ALARM RISER

FIRE ALARM RISER KEY NOTES:

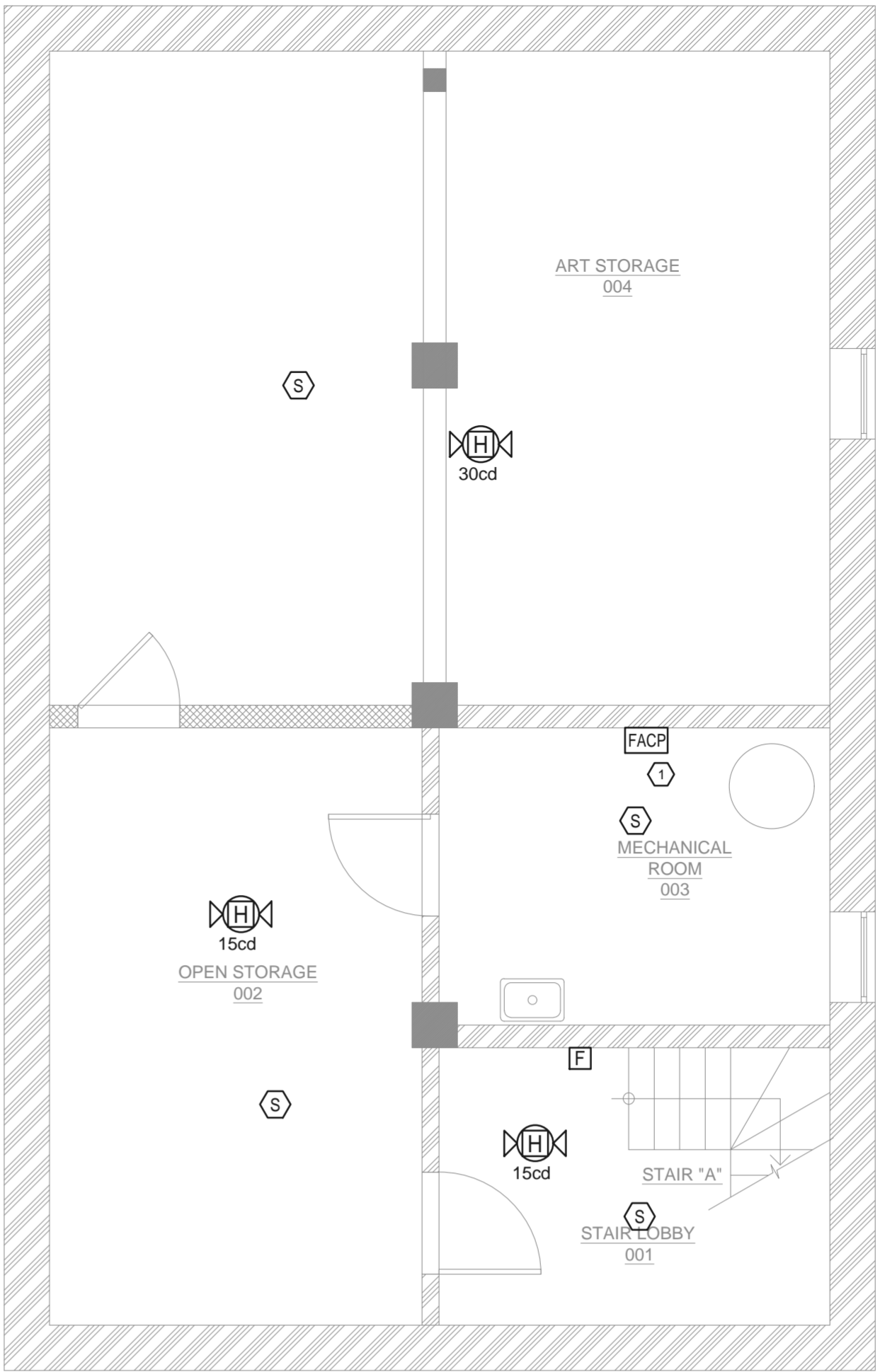
- ① THE FIRE ALARM CONTROL PANEL CABINET SHALL BE GROUNDED SECURELY TO EITHER A COLD WATER PIPE OR A GROUNDING ROD.
- ② THE CIRCUIT BREAKER FEEDING THE FACP SHALL BE IDENTIFIED RED WITH CIRCUIT BREAKER LOCK INSTALLED.
- ③ PROVIDE NEW FACP PANEL. E.C SHALL COORDINATE WITH ARCHITECT FOR THE EXACT LOCATION OF FACP PANEL IN FIELD.

FIRE ALARM RISER GENERAL NOTES:

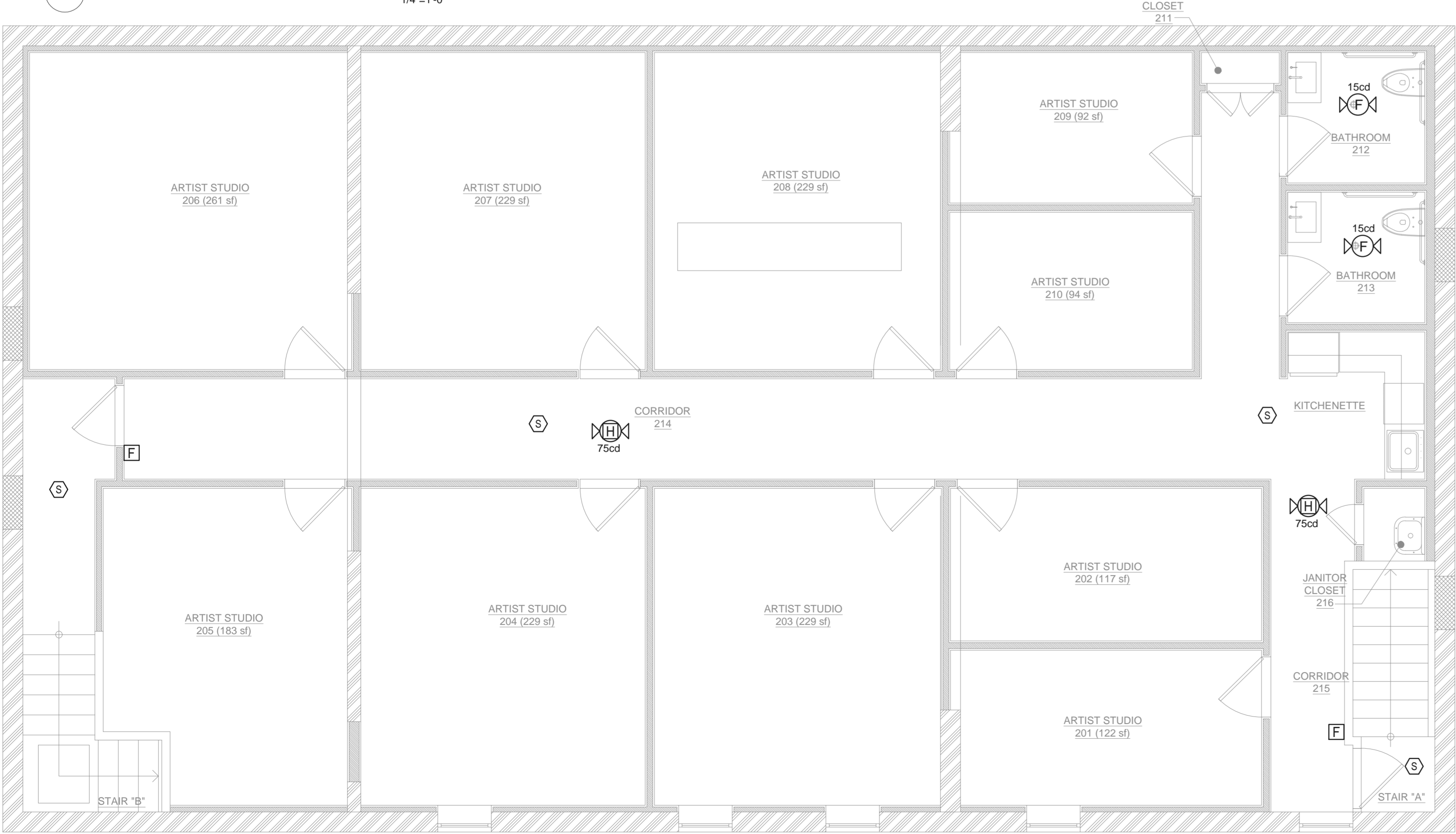
1. ALL COMPONENTS REQUIRED TO MAKE SYSTEM WORKABLE SHALL BE INCLUDED IN BID PRICE. THE DEVICES SHALL BE NEW.
2. EACH FA RELAY SHALL HAVE MINIMUM OF THREE SETS OF 2 CONTACT 10A RATED @ 120V (TYPICAL).
3. THIS RISER DIAGRAM IS A SCHEMATIC REPRESENTATION OF THE FIRE ALARM SYSTEM. REFER TO FLOOR PLANS FOR EXACT QUANTITY OF DEVICES.
4. ALL FIRE ALARM CIRCUITS SHALL BE WIRED NFPA STYLE 4/Y/B (CLASS B) WITH THE EXCEPTION OF THE NETWORK CIRCUIT WHICH SHALL BE NFPA STYLE 7 (CLASS A WITH ISOLATION). DUAL CLASS B NETWORKING IS NOT STYLE 7 AND WILL NOT BE APPROVED.
5. ALL NEW STROBES SHALL BE SYNCHRONIZED.
6. FIRE ALARM CONTRACTOR SHALL USE "FPLR" CABLE FOR ALL NETWORKING PER NEC 760.130 AND COORDINATE THE EXACT REQUIREMENT OF LOCAL AHJ.



2 FIRST FLOOR FIRE ALARM PLAN 1/4"=1'-0"



1 BASEMENT FLOOR FIRE ALARM PLAN 1/4"=1'-0"



3 SECOND FLOOR FIRE ALARM PLAN 1/4"=1'-0"

FIRE ALARM PLAN KEYED NOTES

1. PROVIDE NEW FACP PANEL. E.C. SHALL COORDINATE HEIGHTS WITH THE ARCHITECT & FURNITURE VENDOR PRIOR TO INSTALLATION.
2. CONTRACTOR SHALL PROVIDE A RAP NEAR ENTRY DOOR WITHIN 5' PER NFPA 72 AND LOCAL AHJ REQUIREMENT. RAP SHALL BE MOUNTED WITH REQUIRED SUPPORT AS THERE IS GLASS WALL. COORDINATE WITH ARCHITECT FOR EXACT MOUNTING REQUIREMENTS. BASE BID ACCORDINGLY.

FIRE ALARM GENERAL NOTES

- A. COORDINATE ALL DEVICE LOCATIONS AND MOUNTING HEIGHTS WITH THE ARCHITECT & FURNITURE VENDOR PRIOR TO INSTALLATION.
- B. FIRE ALARM SOUND LEVELS AND INTELLIGIBILITY SHALL COMPLY WITH CHAPTER 9 OF THE APPLICABLE STATE BUILDING CODE.
- C. FIRE ALARM CONTRACTOR SHALL COORDINATE ALL THE FIRE ALARM DEVICE LOCATION WITH THE REFLECTED CEILING PLAN AND CONFIRM IN THE FIELD WITH ARCHITECT/OWNER.
- D. ALL DEVICES SHALL BE COMPATIBLE WITH AND MAINTAIN THE UL LISTING OF FA SYSTEM.
- E. G.C. SHALL FIELD VERIFY EXACT REQUIREMENTS FOR FIRE ALARM SYSTEM PRIOR TO BID. SUPPLY AND INSTALL ALL NECESSARY EQUIPMENT AS REQUIRED.
- F. REFER TO DRAWING, FA-001 FOR FIRE ALARM NOTES, SYMBOL LIST, ABBREVIATIONS AND RISER DIAGRAM.
- G. FINAL CABLE ROUTING SHALL BE DETERMINED IN-FIELD, AND PRIOR TO THE COMMENCEMENT OF WORK, COORDINATED WITH OTHER TRADE CONTRACTORS AND THE OWNER.
- H. CONFIRM REQUIRED DEVICES AND SEQUENCE OF OPERATION WITH FIRE ALARM CONTRACTOR.
- I. FIRE ALARM PULL STATIONS SHALL BE EQUIPPED WITH LIFT COVER AND AUDIBLE SIGNAL. AUDIBLE SIGNAL SHALL SOUND WHEN COVER IS LIFTED TO PREVENT ACCIDENTAL ACTIVATION OF THE FIRE ALARM SYSTEM.
- J. E.C. SHALL COORDINATE FINAL LOCATION OF FIRE ALARM ANNUNCIATOR PANEL AND FIRE ALARM CONTROL PANEL WITH AHJ.
- K. FIRE ALARM DEVICES ARE PLACED IN ACCORDANCE WITH CODE REQUIREMENTS. HOWEVER, FINAL LOCATIONS SHOULD BE CONFIRMED WITH THE OWNER/ARCHITECT TO ENSURE ALIGNMENT WITH ARCHITECTURAL AND FUNCTIONAL CONSIDERATIONS, AS WELL AS COORDINATION WITH OTHER BUILDING SYSTEMS.