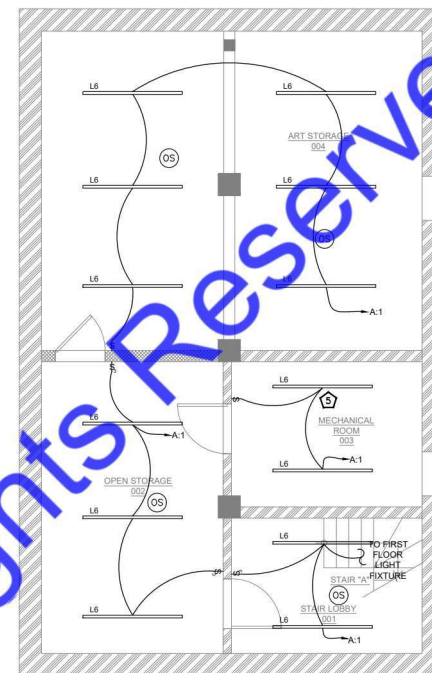


2 FIRST FLOOR LIGHTING PLAN

1/4"=1'-0"



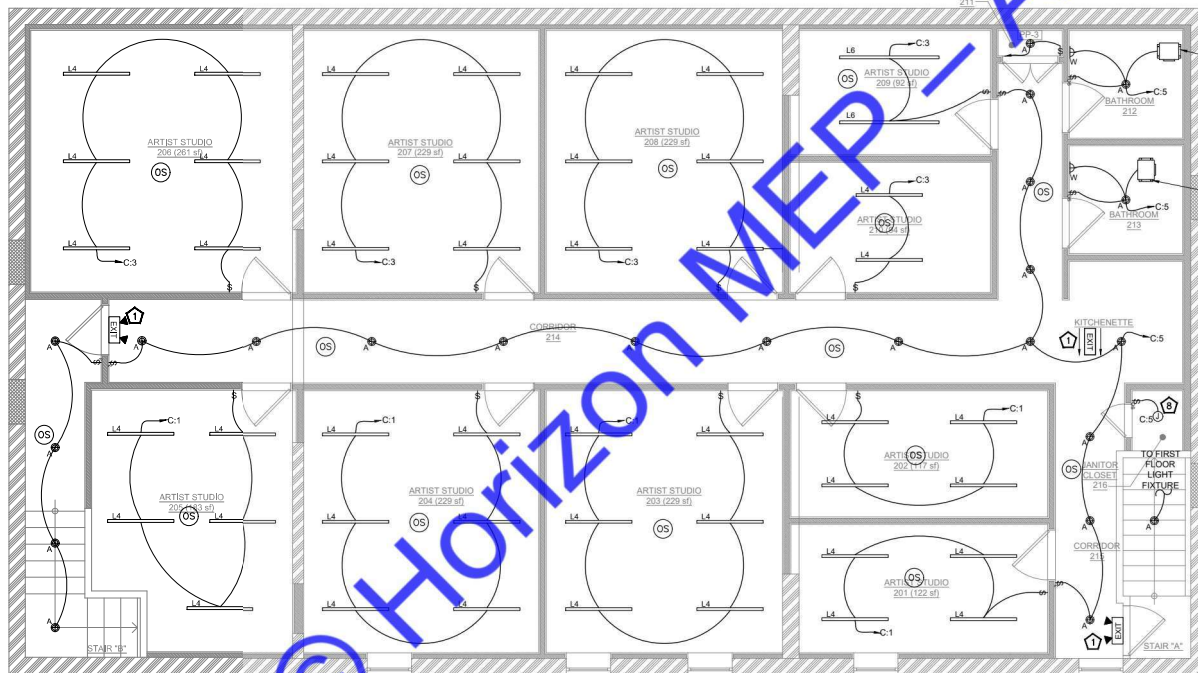
1 BASEMENT FLOOR LIGHTING PLAN

# ELECTRICAL LIGHTING PLAN KEY NOTES:

1. CONNECT NEW EMERGENCY AND EGRESS LIGHTING FIXTURES TO THE NEAREST LIGHTING CIRCUIT AHEAD OF ALL SWITCHING AND CONTROLS PER STATE AND LOCAL CODES.
2. COORDINATE EXACT LOCATION OF THE SWITCH BANK WITH OWNER/ARCHITECT.
3. PROVIDE TIME CLOCK FOR THE BUILDING SIGNAGE. E.C. SHALL COORDINATE WITH THE ARCHITECT/OWNER FOR THE EXACT LOCATION. BASE BID ACCORDINGLY.
4. PROVIDE A DISCONNECT SWITCH AT FEEDER OR BRANCH CIRCUIT ENTERS THE SIGN PER NEC. VERIFY EXACT MOUNTING HEIGHT AND LOCATION FOR SIGNAGE POWER WITH ARCHITECTURAL ELEVATIONS, SIGN VENDOR, AND LANDLORD. ROUTE CIRCUIT TO PANEL VIA TIME CLOCK.
5. LIGHTING NEAR ELECTRICAL PANELS SHALL NOT BE CONTROLLED BY ANY AUTOMATIC MEANS AND SHALL BE COMPLIED AS PER NEC 110.26(D).
6. PROVIDE WALL MOUNTED PHOTOCELL FOR THE EXTERIOR LIGHT FIXTURES. E.C. SHALL COORDINATE WITH THE ARCHITECT/OWNER FOR EXACT LOCATION. BASE BID ACCORDINGLY.
7. E.C. SHALL COORDINATE WITH OWNER/MANUFACTURER/VENDOR FOR THE EXACT REQUIREMENT OF THE TRACK LIGHTS. PROVIDE CURRENT LIMITER ONLY IF REQUIRED. REPORT ENGINEER ON RECORD FOR ANY DISCREPANCY. BASE BID ACCORDINGLY.
8. PROVIDE JUNCTION BOX IN THE JANITOR CLOSET FOR THE LIGHT FIXTURE. E.C. SHALL COORDINATE WITH THE OWNER/ARCHITECT FOR THE LIGHT FIXTURE IN THE JANITOR CLOSET. REPORT ENGINEER ON RECORD FOR ANY DISCREPANCY. BASE BID ACCORDINGLY.
9. INTERCONNECT EXHAUST FANS EF-1, 2, 3 & 4(N) WITH ROOM LIGHTS. E.C. TO COORDINATE WITH MECHANICAL DRAWINGS.

## NOTES:(APPLY TO ALL FIXTURES WHERE APPLICABLE)

- A. EMERGENCY FIXTURES - ALL FIXTURES INDICATED AS EMERGENCY SHALL BE PROVIDED WITH A 90MINUTE BATTERY PACK AND ALL FLOURESCENT FIXTURES.
- B. VERIFY VOLTAGES - E.C. SHALL VERIFY VOLTAGES ON DRAWINGS PRIOR TO ORDERING OR ANY WORK. THE ENGINEER SHALL BE NOTIFIED OF ANY DISCREPANCIES IN THE VOLTAGE OF THE CIRCUITING ON THE DRAWINGS AND THE LUMINAIRE SCHEDULE PRIOR TO ANY PURCHASE OR WORK.
- C. VERIFY LAMPING - E.C. SHALL VERIFY LAMPING WITH THE MANUFACTURER PRIOR TO ORDERING AND NOTIFY THE ENGINEER OF ANY LAMPING DISCREPANCIES.
- D. PROVIDE A COMPLETE INSTALLATION - E.C. SHALL PROVIDE ALL LABOR AND MATERIAL TO PROVIDE A COMPLETE AND FUNCTIONAL SYSTEM PER THE DESIGN INTENT AS DICTATED BY THE SWITCHING TYPE AND LOCATION (INCLUDING DIMMER SWITCHES AND COMPATIBLE BALLASTS OR TRANSFORMERS), CEILING TYPE AND LOCATION, CIRCUITING, VOLTAGES, AND LAMPING TYPES.



3 SECOND FLOOR LIGHTING PLAN

1/4"=1'-0"

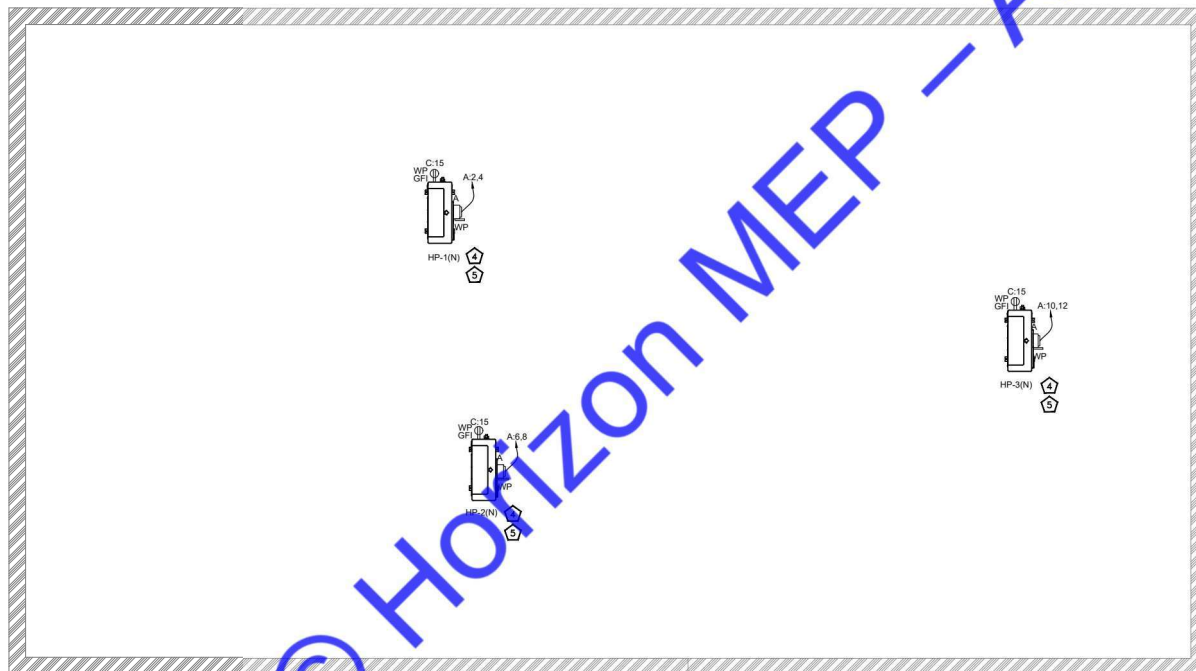
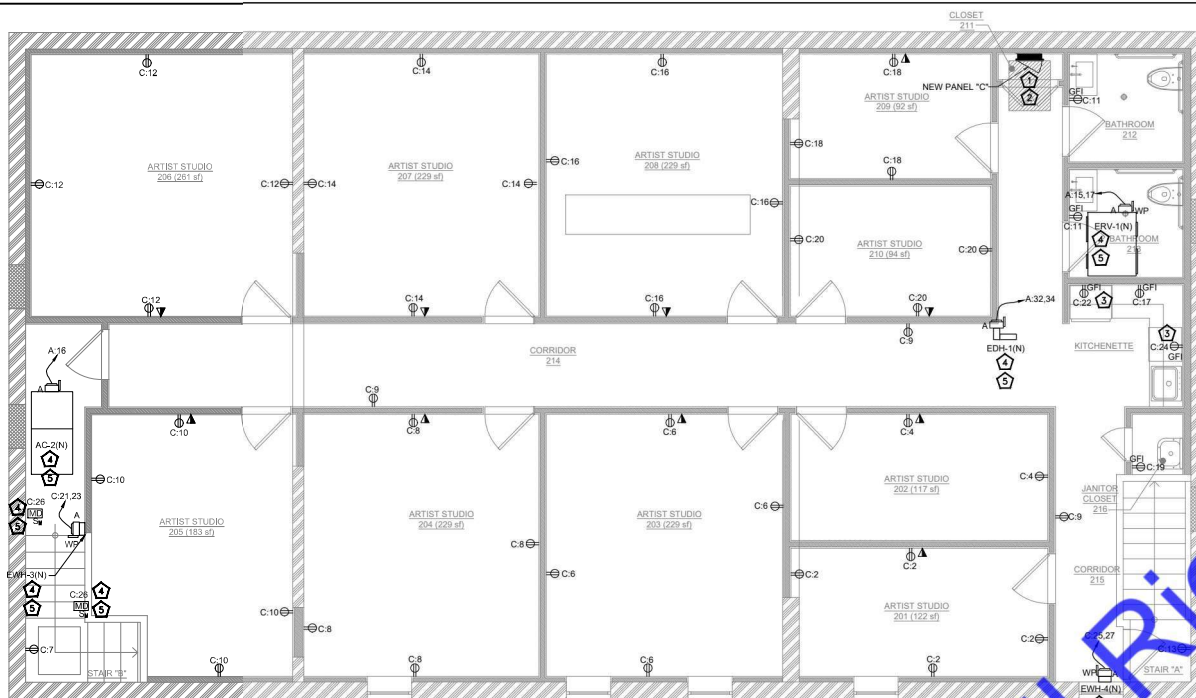
## ELECTRICAL LIGHTING PLAN GENERAL NOTES:

- A. CONTRACTOR ARE ADVISED TO UPDATE THE EMERGENCY LIGHT FIXTURES LOCATIONS/QUANTITY PER SITE REQUIREMENT UP ON FINAL INSPECTION OR PER LOCAL AHJ REQUIREMENT. ONE FOOT CANDLE OF EMERGENCY ILLUMINATION SHALL BE PROVIDED ALONG ALL EGRESS PATHWAYS AND EMERGENCY SIGN SHALL BE INSTALLED AT ALL INTERSECTIONS, EXIT CORRIDORS, PATHWAYS AND EXIT EGRESS OPENINGS IN ACCORDANCE WITH THE IBC 1008.3.1 MEANS OF EGRESS ILLUMINATION. THE EMERGENCY POWER SYSTEM SHALL PROVIDE POWER FOR A DURATION OF 90MINUTES AND SHALL CONSIST OF STORAGE BATTERIES.

Fixture Type	Discription	Manufacturer	Model Number	Quantity	Fixture Wattage
A	4" DIA. LED RECESSED LIGHT	PRESCOLITE	LBRST 4RD M LS SL C59 WH /LBRST-4RD-T-WH FRAME4R-HB-J9	75	19.1W
B1	TRACK MOUNTED LIGHT FIXTURE ON CEILING MOUNTED MONO-RAIL TRACK	SATCO	NUVO TH741	74	30W
L4	4' LINEAR LED LIGHT - RECESSED IN GYPSUM BOARD CEILING	LITECONTROL	4L DW D 4 04 SOF C1 30K9 D100 D01 IC UNV.-J9	48	40.8W
L6	6' LINEAR LED LIGHT - RECESSED IN GYPSUM BOARD CEILING	LITECONTROL	4L DW D 6 06 SOF C1 30K9 D100 D01 IC UNV.-J9	15	61.2W
W	ABOVE MIRROR WALL MOUNTED LED FIXTURE	LUMENCIA	LL63149 24 5MCT BN-J9	4	15W
X	EXTERIOR WALL MOUNTED LED FLOOD FIXTURE.	EXO	SG1-30 3K7 FT UNV CTBS C5-J9	4	30W
EX	EXIT LIGHT FIXTURE W/ DIRECTIONAL ARROWS	COMPASS	CER J9	1	1.78W
EX-1	ILLUMINATED EXIT LIGHT AND TWO LAMP EMERGENCY LIGHT COMBO. W/ BATTERY BACK-UP	COMPASS	CCRSO J9	7	4.58W





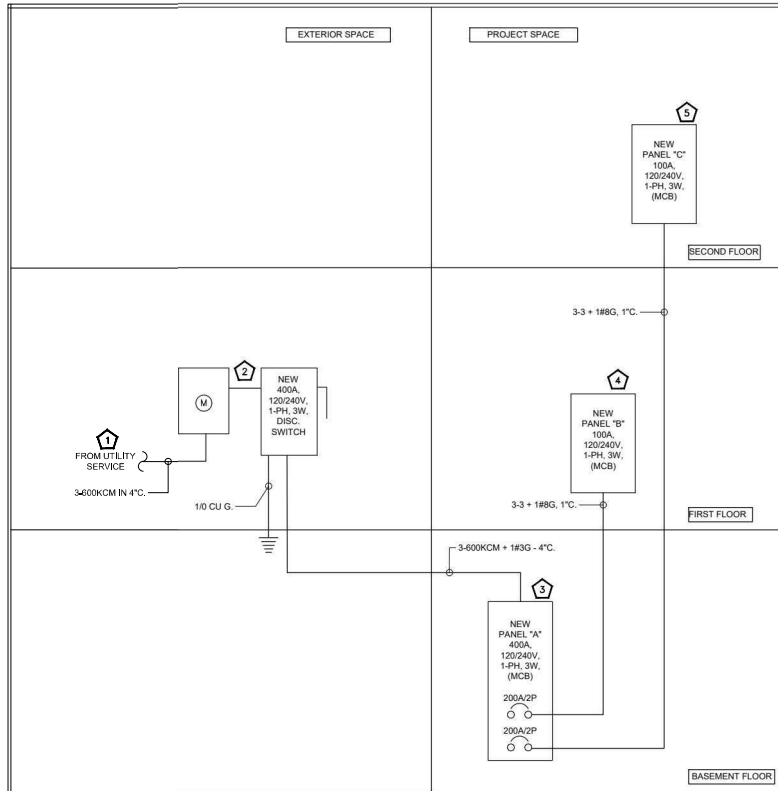


#### ELECTRICAL LIGHTING PLAN KEY NOTES:

1. NEW 100 (XMB), 120/208V, 3-PHASE, 4-WIRE ELECTRICAL PANEL "C". E.C. SHALL COORDINATE EXACT LOCATION WITH ARCHITECT/OWNER.
2. E.C. SHALL VERIFY/PERFORM THE INSTALLATION OF ELECTRICAL PANELS IN COMPLIANCE WITH NEC ARTICLE 110.26(A) AND (B). E.C. SHALL FIELD VERIFY THAT THE PANELS ARE UNOBSTRUCTED AND THE AREA WHERE THE PANELS ARE PLACED SHALL NOT BE USED AS A STORAGE SPACE.
3. ELECTRICAL CONTRACTOR SHALL COORDINATE ELECTRICAL CONNECTION TYPE AND POWER REQUIREMENT WITH EQUIPMENT MANUFACTURER BASE BID ACCORDINGLY.
4. ELECTRICAL CONTRACTOR SHALL COORDINATE DISCONNECT AND FUSE REQUIREMENT FOR MECHANICAL UNIT WITH MECHANICAL CONTRACTOR AND EQUIPMENT MANUFACTURER PRIOR TO ROUGH-IN AND PROVIDE AS REQUIRED. LOCATE AS REQUIRED TO MAINTAIN NEC CLEARANCES. ELECTRICAL CONTRACTOR SHALL COORDINATE WITH THE MECHANICAL CONTRACTOR FOR EXACT LOCATION OF THE MECHANICAL UNITS IN THE FIELD.
5. ELECTRICAL CONTRACTOR SHALL COORDINATE WITH MECHANICAL CONTRACTOR FOR EXACT LOCATION AND POWER REQUIREMENT OF THE MECHANICAL UNIT. FIELD PROVIDE CIRCUIT AND CONTROL AS REQUIRED.

#### ELECTRICAL FLOOR POWER PLAN GENERAL NOTES:

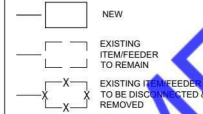
- A. GENERAL USE CABLING SHALL BE OF #12 AWG MINIMUM AT 120V FOR CABLE UP TO 80 FEET, FOR CABLE ABOVE 80 FEET USE #10 AWG CABLES. ADJUST WIRE SIZE FOR A MAXIMUM VOLTAGE DROP OF 3%.
- B. CONTRACTOR TO COORDINATE WITH ARCHITECT FOR EXACT HEIGHT OF OUTLETS.
- C. E.C. SHALL VERIFY ANY THIRD PARTY INSPECTION REQUIRED BY THE LOCAL JURISDICTION PRIOR TO BIDDING THIS PROJECT.
- D. ALL LOW VOLTAGE WIRING TO BE IN CONDUIT UNLESS BY APL.
- E. E.C. TO COORDINATE WITH MECHANICAL CONTRACTOR FOR MECHANICAL EQUIPMENT SENSOR AND THERMOSTAT LOCATION.



#### ELECTRICAL RISER KEYED NOTES:

- 1 UPGRADE EXISTING ELECTRICAL SERVICE TO 400A, 120/240V, 1-PHASE, 3-WIRE ELECTRICAL SERVICE FOR THE PROJECT SPACE. E.C. SHALL COORDINATE WITH LANDLORD/OWNER FOR UPGRADE OF THE SERVICE AND EXACT LOCATION IN FIELD. REPORT TO ENGINEER ON RECORD FOR ANY DISCREPANCIES. E.C. TO COORDINATE ALL INSTALLATION REQUIREMENT WITH OWNER/LANDLORD/UTILITY PRIOR TO BIDDING. BASE BID ACCORDINGLY.
- 2 NEW 400A, 120/240V, 1-PHASE, 3-WIRE ELECTRICAL METER, THE DISCONNECT & CT CABINET FOR THE PROJECT SPACE. E.C. SHALL COORDINATE WITH UTILITY FOR CT CABINET EQUIPMENT & PROVIDE ONLY IF REQUIRED. PROVIDE PER UTILITY SPECIFICATIONS. E.C. SHALL ALSO COORDINATE WITH OWNER, LANDLORD/UTILITY COMPANY FOR LOCATION AND EQUIPMENT INSTALLATION. BASE BID ACCORDINGLY.
- 3 NEW 400A(MCB), 120/240V, 1-PHASE, 3-WIRE ELECTRICAL PANEL "A". E.C. TO COORDINATE EXACT LOCATION WITH ARCHITECT/OWNER.
- 4 NEW 100A(MCB), 120/240V, 1-PHASE, 3-WIRE ELECTRICAL PANEL "B". E.C. TO COORDINATE EXACT LOCATION WITH ARCHITECT/OWNER.
- 5 NEW 100A(MCB), 120/240V, 1-PHASE, 3-WIRE ELECTRICAL PANEL "C". E.C. TO COORDINATE EXACT LOCATION WITH ARCHITECT/OWNER.

#### ELECTRICAL RISER SYMBOLS



#### ELECTRICAL GENERAL NOTES:

- A. ELECTRICAL CONTRACTOR TO COORDINATE FAULT CURRENT (ISC) RATING WITH UTILITY COMPANY AND A/JU PRIOR TO COMMENCING ANY WORK.
- B. ABOVE RISER DIAGRAM IS FOR REFERENCE PURPOSE ONLY. E.C. SHALL VERIFY EXACT POWER DISTRIBUTION IN FIELD & CONFIRM ENGINEER ON RECORD FOR ANY DISCREPANCY.
- C. E.C. SHALL VERIFY INCOMING SERVICE AMPERAGE, WIRE SIZING AND DISTRIBUTION.
- D. ELECTRICAL CONTRACTOR SHALL COORDINATE WITH OWNER/LANDLORD/BASE BUILDING FOR THE EXACT SCOPE OF WORK/UTILITIES.

2 ELECTRICAL RISER DIAGRAM

PANEL: A(N)										MOUNTING:		REFER TO EL. POWER PLAN (EL. SHEET E-9)			
120/240		VOLTS,		1		PHASE,		3		WIRE		PANEL LOCATION:		REFER TO EL. POWER PLAN (EL. SHEET E-9)	
MAIN CB		400A		MLO: NA		BUS: 400A		MIN,		FED FROM:		REFER TO EL. RISER DIG. (EL. SHEET E-9)			
NOTE: L: LIGHTING, R: RECEPTACLES, H: HVAC LOAD, M: MOTOR LOAD, E: EQUIPMENTS, O: OTHER/MISC. (TYPICAL)															
CKT NO.	TRIP AMPS	DESCRIPTION OF LOAD	LOAD TYPE	LOAD (KVA)	MINIMUM BRANCH CIRCUIT	PER PHASE (KVA)		MINIMUM BRANCH CIRCUIT	LOAD (KVA)	LOAD TYPE	DESCRIPTION OF LOAD	TRIP AMPS	CKT NO.		
1	20	LIGHTING-BASEMENT	L	0.79	2#12, #12G, 3/4" C.	4.39			3.60	H	HP-1(N)	35/2P	2		
3	30/2P	ACCU-1(N)	H	2.18	2#10 #10G, 3/4" C.	5.78	5.78	2#8 #8G, 3/4" C.	3.60	H	HP-2(N)	35/2P	4		
5	30/2P	ACCU-2(N)	H	2.18	2#10 #10G, 3/4" C.	5.78	5.78	2#8 #8G, 3/4" C.	3.60	H	HP-3(N)	35/2P	6		
7	30/2P	ACCU-3(N)	H	2.18	2#10 #10G, 3/4" C.	5.78	7.12	2#8 #8G, 3/4" C.	3.60	H	HP-3(N)	35/2P	10		
9	50/2P	ERV-1(E)	H	3.52	2#8, 1#10G, 3/4" C.	4.57		2#12, #12G, 3/4" C.	1.06	H	AC-1(N)	15	14		
11	15/2P	ERV-1(E)	H	1.49	2#12, #12G, 3/4" C.	3.24	2.54	2#12, #12G, 3/4" C.	1.06	H	AC-2(N)	15	16		
13	100/2P	PANEL B(N)	O	10.03	3#3, 1#8G, 1" C.	18.49	18.49	3#3, 1#8G, 1" C.	8.46	O	PANEL C(N)	100/2P	20		
15	20	RECEPTACLE-STAIR LOBBY	R	0.18	2#12, #12G, 3/4" C.	0.08		2#12, #12G, 3/4" C.	0.08	M	RCP	20	24		
17	20	RECEPTACLE-ART STORAGE	R	0.18	2#12, #12G, 3/4" C.	0.08	0.08	2#12, #12G, 3/4" C.	0.25	M	MOTORISED DAMPERS	20	26		
19	20	RECEPTACLE-OPEN STORAGE	R	0.18	2#12, #12G, 3/4" C.	0.08	0.08	2#12, #12G, 3/4" C.	0.50	H	EDW-1(N)	20/2P	28		
21	20	RECEPTACLE-MECHANICAL ROOM	R	0.18	2#12, #12G, 3/4" C.	0.08	0.08	2#12, #12G, 3/4" C.	0.50	H	EDW-1(N)	20/2P	30		
23	20	RECEPTACLE-EXTERIOR	R	0.72	2#12, #12G, 3/4" C.	4.25	2.75	2#12, #12G, 3/4" C.	2.00	H	EDH-1(N)	20/2P	32		
25	30/2P	WATER HEATER	H	2.25	2#10 #10G, 3/4" C.	0.00	2.75	2#12, #12G, 3/4" C.	0.50	H	EDW-2(N)	20/2P	34		
27	20	SPARE				0.00			0.50	H	SPACE	20/2P	36		
29	20	SPARE				0.00	0.00				SPACE	20/2P	40		
41		SPACE				0.00					SPACE		42		
TOTAL CONNECTED LOAD (KVA)						48.12	46.13								
LOAD CLASSIFICATION		CONNECTED LOAD (KVA)		DEMAND FACTOR		DEMAND LOAD (KVA)		PANEL TOTAL LOAD							
TOTAL LIGHTING	L	9.9		125%		0.99		TOTAL CONNECTED LOAD	94.26	KVA					
TOTAL RECEPTACLE	R	1.1		100%		1.44		TOTAL DEMAND LOAD	94.45	KVA					
TOTAL HVAC	H	54.71		100%		54.71		TOTAL CONNECTED CURRENT	392.73	AMP					
TOTAL MOTOR	M	33		100%		0.33		TOTAL DEMAND CURRENT	393.55	AMP					
TOTAL KITCHEN/EQUIPMENTS	E	0.00		100%		0.00		SYSTEM VOLTAGE	120/240V						
TOTAL OTHER/MISCELLANEOUS	O	36.99		100%		36.99									

PANEL: B(N)										MOUNTING:		REFER TO EL. POWER PLAN (EL. SHEET E-9)			
120/240		VOLTS,		1		PHASE,		3		WIRE		PANEL LOCATION:		REFER TO EL. POWER PLAN (EL. SHEET E-9)	
MAIN CB		100A		MLO:		NA		BUS:		125A		MIN,		FED FROM:	
NOTE: L: LIGHTING, R: RECEPTACLES, H: HVAC LOAD, M: MOTOR LOAD, E: EQUIPMENTS, O: OTHER/MISC. (TYPICAL)															
CKT NO.	TRIP AMPS	DESCRIPTION OF LOAD		LOAD TYPE	LOAD (KVA)	MINIMUM BRANCH CIRCUIT		PER PHASE (KVA)		MINIMUM BRANCH CIRCUIT		LOAD (KVA)	LOAD TYPE	DESCRIPTION OF LOAD	
						A	B								
1	20	LIGHTING-ART GALLERY 111	L	0.70	2#12, #12G, 3/4" C.	1.78				2#12, #12G, 3/4" C.	1.08	R	RECEPTACLE-ART GALLERY 111	20	2
3	20	LIGHTING-ART GALLERY 110	L	1.44	2#12, #12G, 3/4" C.	1.42	2.16			2#12, #12G, 3/4" C.	0.72	R	RECEPTACLE-ART GALLERY 110	20	4
5	20	LIGHTING-ART GALLERY 103 & CORRIDOR	L	0.70	2#12, #12G, 3/4" C.	1.42				2#12, #12G, 3/4" C.	0.72	R	RECEPTACLE-ART GALLERY 110	20	6
7	20	LIGHTING-STORAGE 103 & FOOD PREP 105, 106, 107, 108, 109, 110 & 112	L	0.65	2#12, #12G, 3/4" C.	1.37				2#12, #12G, 3/4" C.	0.72	R	RECEPTACLE-ART GALLERY 103	20	8
9	20	LIGHTING-STORAGE 112, LOBBY 113	L	0.16	2#12, #12G, 3/4" C.	0.88				2#12, #12G, 3/4" C.	0.72	R	RECEPTACLE-RECEPTION	20	10
11	20	LIGHTING-EXTERIOR	L	0.26	2#12, #12G, 3/4" C.	0.62				2#12, #12G, 3/4" C.	0.36	R	RECEPTACLE-RESTROOMS	20	12
13	20	INT FLOODECK	L	1.00	2#12, #12G, 3/4" C.	1.36				2#12, #12G, 3/4" C.	0.36	R	RECEPTACLE-STAIR A & CORRIDOR	20	14
15	20	BUILDING SIGN	L	1.00	2#12, #12G, 3/4" C.	1.10				2#12, #12G, 3/4" C.	0.10	E	GAS FRIED RANGE	20	16
17	20	RECEPTACLE-STORAGE 112	R	0.18	2#12, #12G, 3/4" C.	1.38				2#12, #12G, 3/4" C.	1.20	E	REFRIGERATOR	20	18
19	20	RECEPTACLE-STORAGE 104	R	0.18	2#12, #12G, 3/4" C.	1.38		1.38		2#12, #12G, 3/4" C.	1.20	E	DISHWASHER	20	20
21	20	RECEPTACLE-FOOD PREP 105	R	0.36	2#12, #12G, 3/4" C.	1.86				2#12, #12G, 3/4" C.	1.50	E	WASHER	20	22
23	20	SPARE				3.60		3.60		2#8, 1#10G, 3/4" C.	3.60	E	DRYER	40/2P	24
25	20	SPARE				3.60		0.00			3.60	E		20	26
27	20	SPARE						0.00					SPARE	20	28
29	20	SPARE						0.00					SPARE	20	30
TOTAL CONNECTED LOAD (KVA)						12.28	10.23								

PANEL: C(N)										MOUNTING:		REFER TO EL. POWER PLAN (EL. SHEET E-9)						
120/240		VOLTS,		1		PHASE,		3		WIRE		PANEL LOCATION:		REFER TO EL. POWER PLAN (EL. SHEET E-9)				
MAIN CB		100A		MLO:		NA		BUS:		125A		MIN,		FED FROM:		REFER TO EL. RISER DIG. (EL. SHEET E-9)		
NOTE: L: LIGHTING, R: RECEPTACLES, H: HVAC LOAD, M: MOTOR LOAD, E: EQUIPMENTS, O: OTHER/MISC. (TYPICAL)																		
CKT NO.	TRIP AMPS	DESCRIPTION OF LOAD			LOAD TYPE	LOAD (KVA)	MINIMUM BRANCH CIRCUIT		PER PHASE (KVA)		MINIMUM BRANCH CIRCUIT		LOAD (KVA)	LOAD TYPE	DESCRIPTION OF LOAD		TRIP AMPS	CKT NO.
1	20	LIGHTING-ARTIST STUDIO 201-205	L	1.20		2#12, #12G, 3/4" C.	1.92			2#12, #12G, 3/4" C.	0.72	R	RECEPTACLE-ARTIST STUDIO 201	15	2			
3	20	LIGHTING-ARTIST STUDIO 206-210	L	1.20		2#12, #12G, 3/4" C.	1.92			2#12, #12G, 3/4" C.	0.72	R	RECEPTACLE-ARTIST STUDIO 202	15	4			
5	20	LIGHTING-CORRIDOR 214 & 215, RESTROOMS, EF-3 & 4	L	0.60		2#12, #12G, 3/4" C.	1.32			2#12, #12G, 3/4" C.	0.72	R	RECEPTACLE-ARTIST STUDIO 203	15	6			
7	20	RECEPTACLE-STAIR B	R	0.18		2#12, #12G, 3/4" C.	1.26			2#12, #12G, 3/4" C.	0.72	R	RECEPTACLE-ARTIST STUDIO 204	15	8			
9	20	RECEPTACLE-CORRIDOR	R	0.54		2#12, #12G, 3/4" C.	1.26			2#12, #12G, 3/4" C.	0.72	R	RECEPTACLE-ARTIST STUDIO 205	15	10			
11	20	RECEPTACLE-RESTROOMS	R	0.36		2#12, #12G, 3/4" C.	1.08			2#12, #12G, 3/4" C.	0.72	R	RECEPTACLE-ARTIST STUDIO 206	15	12			
13	20	RECEPTACLE-STAIR A	R	0.18		2#12, #12G, 3/4" C.	0.90			2#12, #12G, 3/4" C.	0.72	R	RECEPTACLE-ARTIST STUDIO 207	15	14			
15	20	RECEPTACLE-ROOF	R	0.54		2#12, #12G, 3/4" C.	1.26			2#12, #12G, 3/4" C.	0.72	R	RECEPTACLE-ARTIST STUDIO 208	15	16			
17	20	RECEPTACLE-KITCHENETTE	R	0.18		2#12, #12G, 3/4" C.	0.90			2#12, #12G, 3/4" C.	0.72	R	RECEPTACLE-ARTIST STUDIO 209	20	18			
19	20	RECEPTACLE-JANITOR CLOSET	R	0.18		2#12, #12G, 3/4" C.	0.90			2#12, #12G, 3/4" C.	0.72	R	RECEPTACLE-ARTIST STUDIO 210	15	20			
21	20/2P	EW-H-3(N)	H	0.50		2#12, #12G, 3/4" C.	1.70			2#12, #12G, 3/4" C.	1.20	E	REFRIGERATOR	15	22			
23	20/2P	EW-H-4(N)	H	0.50		2#12, #12G, 3/4" C.	1.70			2#12, #12G, 3/4" C.	1.20	E	DISHWASHER	20	24			
25	20/2P	EW-H-5(N)	H	0.50		2#12, #12G, 3/4" C.	0.75			2#12, #12G, 3/4" C.	0.25	M	MOTORISED DAMPERS	20	26			
27	20	SPARE					0.00						SPARE	20	28			
29	20	SPARE					0.00						SPARE	20	30			
TOTAL CONNECTED LOAD (KVA)							8.75	8.26										

LOAD SUMMARY		CONNECTED LOAD (KVA)		DEMAND FACTOR		DEMAND LOAD (KVA)	
TOTAL LIGHTING	9.70	125%		12.13			
TOTAL RECEPTACLE	16.20	100%		16.20			
TOTAL HVAC	45.03	100%		45.03			
LARGEST MOTOR LOAD	6.00	125%		7.50			
TOTAL KITCHEN/EQUIPMENTS	13.60	100%		13.60			
TOTAL OTHER/MISCELLANEOUS	0.00	100%		0.00			
TOTAL CONNECTED LOAD				90.53			
TOTAL DEMAND LOAD				94.46			
TOTAL CONNECTED CURRENT				377.21			
TOTAL DEMAND CURRENT				393.56			

1 ELECTRICAL PANEL SCHEDULE & LOAD SUMMARY



# COMcheck Software Version COMcheckWeb

## Interior Lighting Compliance Certificate

### Project Information

Energy Code: 90.1 (2019) Standard  
Project Title: STUDIO LOFTS LLC  
Project Type: Alteration

Owner/Agent:

Designer/Contractor:

### Allowed Interior Lighting Power

A Area Category	B Floor Area (ft <sup>2</sup> )	C Allowed Watts / ft <sup>2</sup>	D Allowed Watts
1-Retail	6156	0.84	5171
Total Allowed Watts =			5171

### Proposed Interior Lighting Power

A Fixture ID : Description / Lamp / Wattage Per Lamp / Ballast	B Lamps/ Fixture	C # of Fixture	D Watt. (C X D)	E
Retail (6156 sq.ft.)				
LED: A: Other:	1	75	19	1432
LED: B1: Other:	1	74	39	Exempt
Exemption: Lighting Sales or Educational Demonstration Systems				
LED: L4: Other:	1	48	41	1958
LED: L6: Other:	1	15	61	918
LED: W: Other:	1	4	15	60
Total Proposed Watts =			4369	

### Interior Lighting PASSES

#### Interior Lighting Compliance Statement

Compliance Statement: The proposed interior lighting alteration project represented in this document is consistent with the building plans, specifications, and other calculations submitted with this permit application. The proposed interior lighting systems have been designed to meet the 90.1 (2019) Standard requirements in COMcheck Version COMcheckWeb and to comply with any applicable mandatory requirements listed in the Inspection Checklist.

Name - Title \_\_\_\_\_ Signature \_\_\_\_\_ Date \_\_\_\_\_

Project Title: STUDIO LOFTS LLC  
Data filename:

Report date: 11/03/25  
Page 1 of 5



# COMcheck Software Version COMcheckWeb

## Exterior Lighting Compliance Certificate

### Project Information

Energy Code: 90.1 (2019) Standard  
Project Title: STUDIO LOFTS LLC  
Project Type: Alteration  
Exterior Lighting Zone: 3 (Other (LZ3))

Owner/Agent:

Designer/Contractor:

### Allowed Exterior Lighting Power

A Area/Surface Category	B Quantity	C Allowed Watts / Wattage	D Tradable Wattage	E Allowed Watts (B X C)
Entry canopy	50 ft <sup>2</sup>	0.4	Yes	20
Total Tradable Watts (a) =				20
Total Allowed Watts =				20
Total Allowed Supplemental Watts (b) =				500

(a) Wattage tradeoffs are only allowed between tradable areas/surfaces.

(b) A supplemental allowance equal to 500 watts may be applied toward compliance of both non-tradable and tradable areas/surfaces.

### Proposed Exterior Lighting Power

A Fixture ID : Description / Lamp / Wattage Per Lamp / Ballast	B Lamps/ Fixture	C # of Fixture	D Watt. (C X D)	E
Entry canopy (50 ft <sup>2</sup> ): Tradable Wattage				
LED: X: Other:	1	4	30	120
Total Tradable Proposed Watts =				120

### Exterior Lighting PASSES

#### Exterior Lighting Compliance Statement

Compliance Statement: The proposed exterior lighting alteration project represented in this document is consistent with the building plans, specifications, and other calculations submitted with this permit application. The proposed exterior lighting systems have been designed to meet the 90.1 (2019) Standard requirements in COMcheck Version COMcheckWeb and to comply with any applicable mandatory requirements listed in the Inspection Checklist.

Name - Title \_\_\_\_\_ Signature \_\_\_\_\_ Date \_\_\_\_\_

Project Title: STUDIO LOFTS LLC  
Data filename:

Report date: 11/03/25  
Page 2 of 5