

ELECTRICAL LIGHTING PLAN KEY NOTES:

1. CONNECT NEW EMERGENCY AND EGRESS LIGHTING FIXTURES TO THE NEAREST LIGHTING CIRCUIT AHEAD OF ALL SWITCHING AND CONTROLS PER STATE AND LOCAL CODES.
2. COORDINATE EXACT LOCATION OF THE SWITCHES WITH OWNER/ARCHITECT.
3. PROVIDE TIME CLOCK FOR THE BUILDING SIGNAGE. E.C. SHALL COORDINATE WITH THE ARCHITECT/OWNER FOR THE EXACT LOCATION. BASE BID ACCORDINGLY.
4. PROVIDE A DISCONNECT SWITCH AT FEEDER OR BRANCH CIRCUIT ENTERS THE SIGN PER NEC. VERIFY EXACT MOUNTING HEIGHT AND LOCATION FOR SIGNAGE POWER WITH ARCHITECTURAL ELEVATIONS, SIGN VENDOR, AND LANDLORD. ROUTE CIRCUIT TO PANEL VIA TIME CLOCK.
5. LIGHTING NEAR ELECTRICAL PANELS SHALL NOT BE CONTROLLED BY ANY AUTOMATIC MEANS AND SHALL BE COMPILED AS PER NEC 110.26(D).
6. INTERCONNECT EXHAUST FANS EF-1, 2, 3 & 4(N) WITH ROOM LIGHTS. E.C. TO COORDINATE WITH MECHANICAL DRAWINGS.

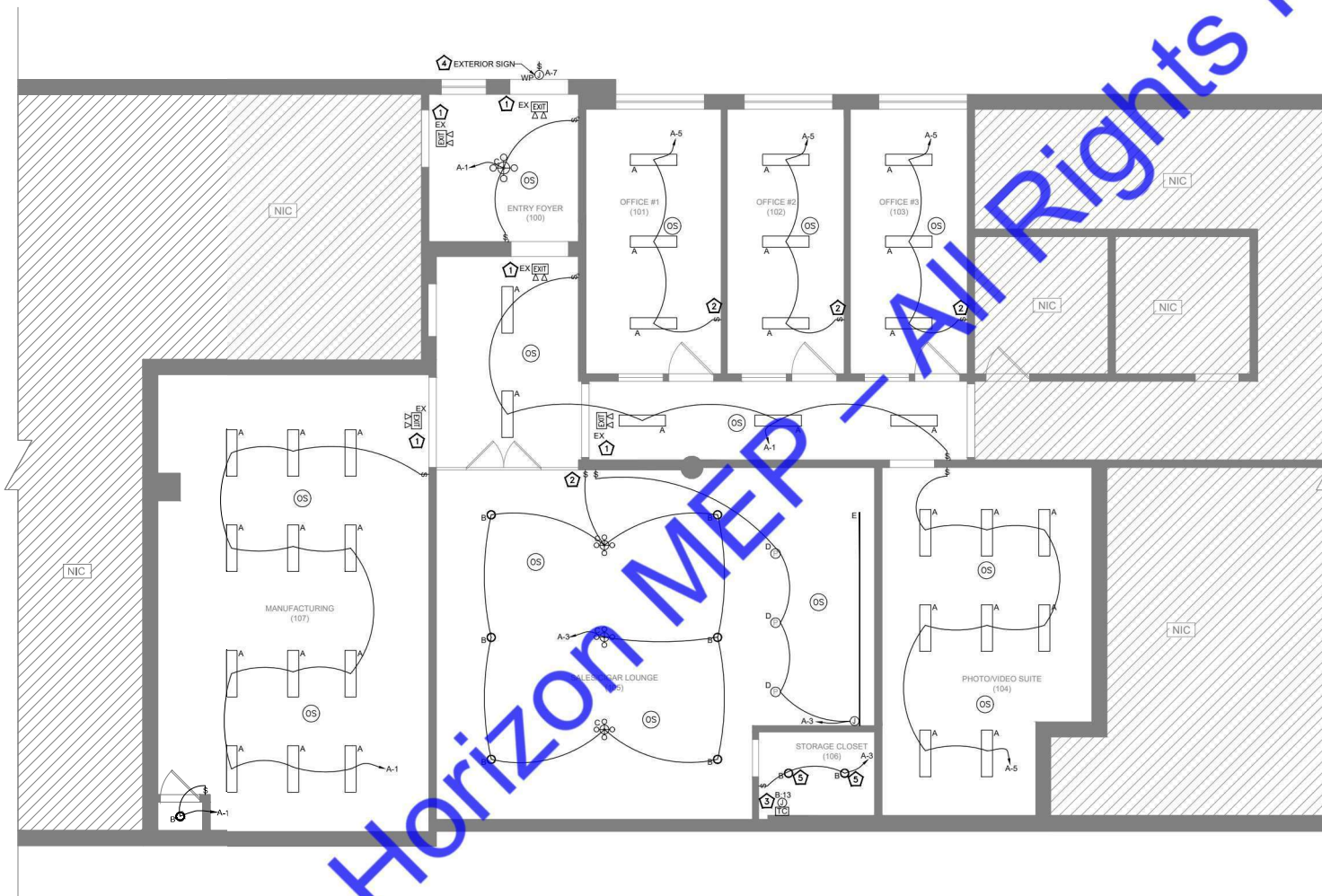
NOTES:(APPLY TO ALL FIXTURES WHERE APPLICABLE)

- A. EMERGENCY FIXTURES - ALL FIXTURES INDICATED AS EMERGENCY SHALL BE PROVIDED WITH A 90-MINUTE BATTERY PACK AND ALL FLUORESCENT FIXTURES.
- B. VERIFY VOLTAGES - E.C. SHALL VERIFY VOLTAGES ON DRAWINGS PRIOR TO ORDERING OR ANY WORK. THE ENGINEER SHALL BE NOTIFIED OF ANY DISCREPANCIES IN THE VOLTAGE OF THE CIRCUITING ON THE DRAWINGS AND THE LUMINAIRE SCHEDULE PRIOR TO ANY PURCHASE OR WORK.
- C. VERIFY LAMPING - E.C. SHALL VERIFY LAMPING WITH THE MANUFACTURER PRIOR TO ORDERING AND NOTIFY THE ENGINEER OF ANY LAMPING DISCREPANCIES.
- D. PROVIDE A COMPLETE INSTALLATION - E.C. SHALL PROVIDE ALL LABOR AND MATERIAL TO PROVIDE A COMPLETE AND FUNCTIONAL SYSTEM PER THE DESIGN INTENT AS DICTATED BY THE SWITCHING TYPE AND LOCATION (INCLUDING DIMMER SWITCHES AND COMPATIBLE BALLASTS OR TRANSFORMERS), CEILING TYPE AND LOCATION, CIRCUITING, VOLTAGES, AND LAMPING TYPES.

ELECTRICAL LIGHTING PLAN GENERAL NOTES:

- A. CONTRACTOR ARE ADVISED TO UPDATE THE EMERGENCY LIGHT FIXTURES LOCATIONS/QUANTITY PER SITE REQUIREMENT UP ON FINAL INSPECTION OR PER LOCAL AHJ REQUIREMENT. ONE FOOT CANDLE OF EMERGENCY ILLUMINATION SHALL BE PROVIDED ALONG ALL EGRESS PATHWAYS AND EMERGENCY SIGN SHALL BE INSTALLED AT ALL INTERSECTIONS, EXIT CORRIDORS, PATHWAYS AND EXIT EGRESS OPENINGS IN ACCORDANCE WITH THE IBC 1008.3.1 MEANS OF EGRESS ILLUMINATION. THE EMERGENCY POWER SYSTEM SHALL PROVIDE POWER FOR A DURATION OF 20 MINUTES AND SHALL CONSIST OF STORAGE BATTERIES.

Fixture Type	Description	Manufacturer	Model Number	Quantity	Fixture Wattage
A	1'x4' LIGHT FIXTURE	TBD	TBD	34	40W
B	SURFACE MOUNT CEILING LIGHT FIXTURE	TBD	TBD	9	75W
C	CHANDELIER DECORATIVE CANDELABRA LAMPS	TBD	TBD	4	150W
D	PENDANT LIGHT FIXTURE	TBD	TBD	3	75W
E	UNDER CABINET STRIP LIGHTING	TBD	TBD	15FT	2W/FT
EX	EXIT LIGHT FIXTURE WITH EMERGENCY LIGHT COMBO, W/ BATTERY BACK-UP	TBD	TBD	5	4W

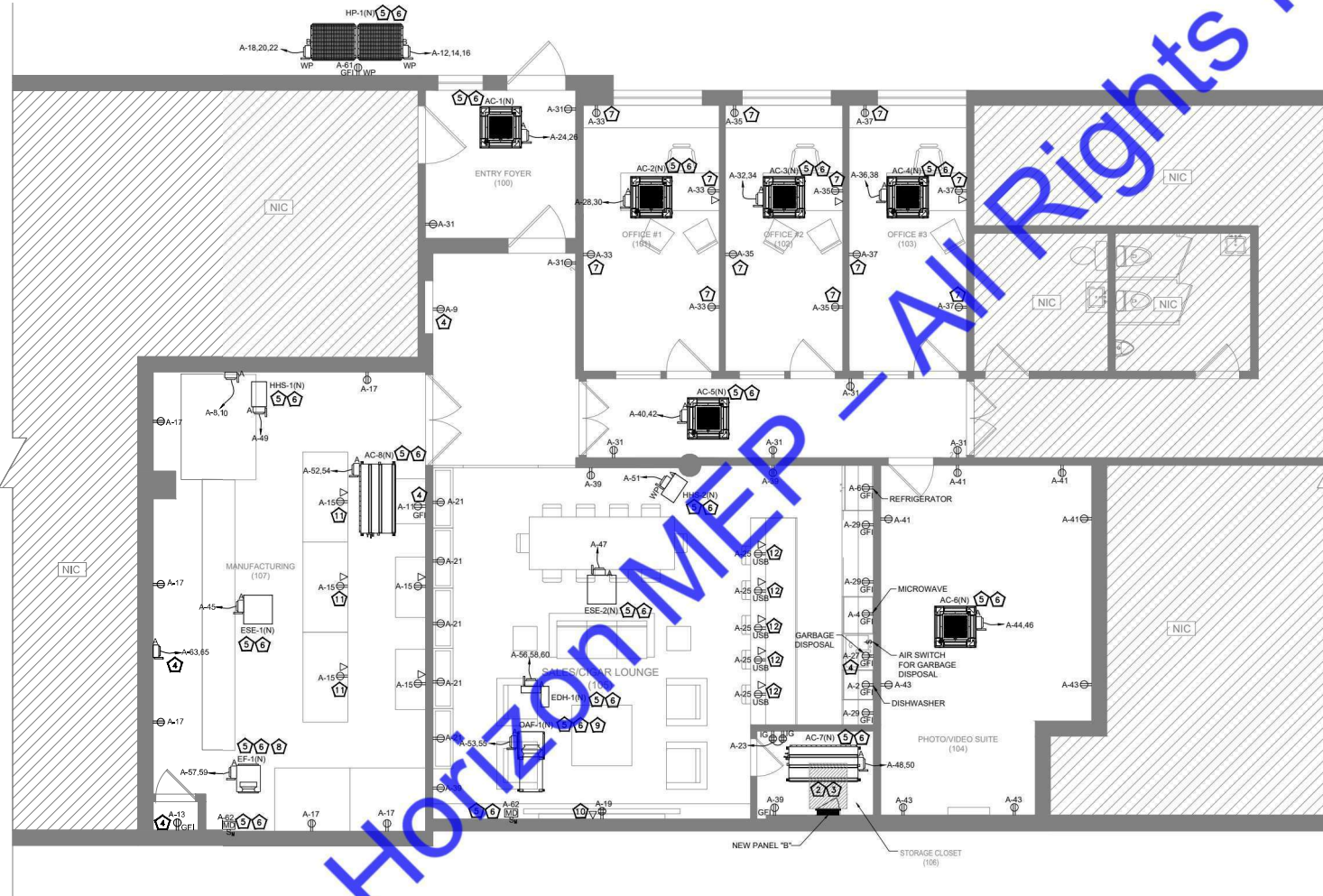
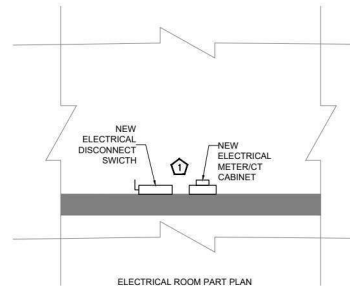


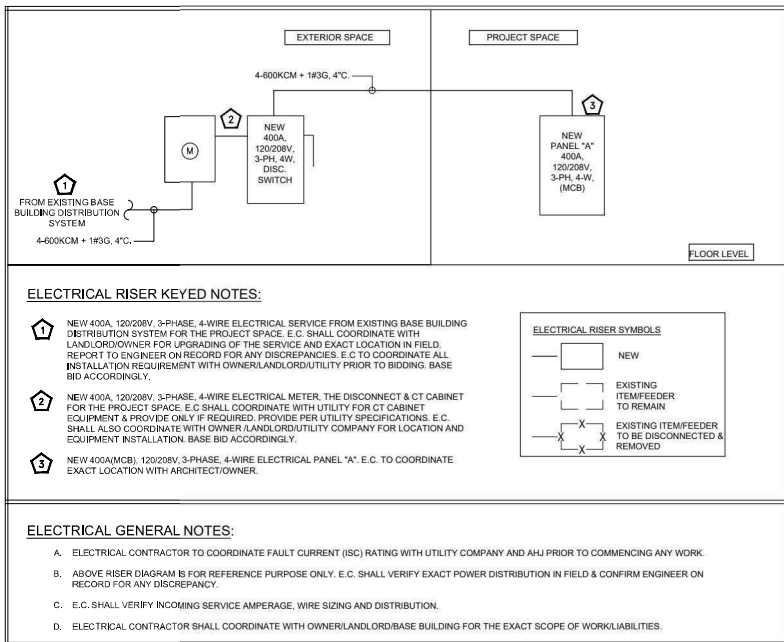
ELECTRICAL LIGHTING PLAN KEY NOTES:

1. NEW 400V, 120/208V, 3-PHASE, 4-WIRE ELECTRICAL METER, THE DISCONNECT & CT CABINET FOR THE PROJECT SPACE. E.C. SHALL COORDINATE WITH UTILITY FOR CT CABINET EQUIPMENT & PROVIDE ONLY IF REQUIRED, PROVIDE PER UTILITY SPECIFICATIONS. E.C. SHALL ALSO COORDINATE WITH OWNER LANDLORD/UTILITY COMPANY FOR LOCATION AND EQUIPMENT INSTALLATION. BASE BID ACCORDINGLY.
2. NEW 400A(MCB), 120/208V, 3-PHASE, 4-WIRE ELECTRICAL PANEL "A". E.C. SHALL COORDINATE EXACT LOCATION WITH ARCHITECT/OWNER.
3. E.C. SHALL VERIFY/PERFORM THE INSTALLATION OF ELECTRICAL PANELS IN COMPLIANCE WITH NEC ARTICLE 110.26(A) AND (B). E.C. SHALL FIELD VERIFY THAT THE PANELS ARE UNOBSTRUCTED AND THE AREA WHERE THE PANELS ARE PLACED SHALL NOT BE USED AS A STORAGE SPACE.
4. ELECTRICAL CONTRACTOR SHALL COORDINATE ELECTRICAL CONNECTION TYPE AND POWER REQUIREMENT WITH EQUIPMENT & DISPLAY MANUFACTURER, REPORT ENGINEER ON RECORD FOR ANY DISCREPANCY. BASE BID ACCORDINGLY.
5. ELECTRICAL CONTRACTOR SHALL COORDINATE DISCONNECT AND FUSE REQUIREMENT FOR MECHANICAL UNIT WITH MECHANICAL CONTRACTOR AND EQUIPMENT MANUFACTURER PRIOR TO ROUGH-IN AND PROVIDE AS REQUIRED. LOCATE AS REQUIRED TO MAINTAIN NEC CLEARANCES. ELECTRICAL CONTRACTOR SHALL COORDINATE WITH THE MECHANICAL CONTRACTOR FOR EXACT LOCATION OF THE MECHANICAL UNITS IN THE FIELD.
6. ELECTRICAL CONTRACTOR SHALL COORDINATE WITH MECHANICAL CONTRACTOR FOR EXACT LOCATION AND POWER REQUIREMENT OF THE MECHANICAL UNIT IS FIELD PROVIDE CIRCUIT AND CONTROL AS REQUIRED.
7. E.C. SHALL INTERCONNECT ONE HALF OF EACH DUPLEX RECEPTACLE TO THE ASSOCIATED OCCUPANCY SENSOR OR AUTOMATIC CONTROL DEVICE. RECEPTACLES SHALL BE PERMANENTLY MARKED "CONTROLLED" IN COMPLIANCE WITH ASHRAE 90.1 REQUIREMENTS, REPORT ANY DISCREPANCIES TO THE ENGINEER OF RECORD PRIOR TO BIDDING. BASE BID ACCORDINGLY.
8. INTERCONNECT EF-1(N) WITH AC-7(N) & AC-8(N). REFER TO MECHANICAL DRAWINGS FOR THE MORE DETAILS.
9. INTERCONNECT OAF-1(N) WITH AC-1(N) TO AC-8(N). REFER TO MECHANICAL DRAWINGS FOR THE MORE DETAILS.
10. PROVIDE POWER AND DATA CONNECTIONS FOR TELEVISION AT LOCATION SHOWN. VERIFY EXACT REQUIREMENTS PRIOR TO BID. COORDINATE WITH LOCATION AND MOUNTING HEIGHT WITH ARCHITECT AND OWNER PRIOR TO BID, ROUGH-IN AND INSTALL.
11. PROVIDE POWER FOR THE WORKSTATIONS. E.C. SHALL PROVIDE NECESSARY MOUNTING ARRANGEMENT FOR THE OUTLETS IN FIELD PER FIELD CONDITIONS. BASE BID ACCORDINGLY.
12. PROVIDE USB OUTLETS BELOW THE TABLE. E.C. SHALL RUN THE ELECTRICAL CONDUITS ON THE TABLE SUPPORTS PER THE FIELD CONDITION AND MAKE NECESSARY ARRANGEMENT FOR MOUNTING PER FIELD CONDITIONS. BASE BID ACCORDINGLY.

ELECTRICAL FLOOR POWER PLAN GENERAL NOTES:

- A. GENERAL USE CARLING SHALL BE OF #12 AWG MINIMUM AT 120V FOR CABLE UP TO 80 FEET. FOR CABLE ABOVE 80 FEET USE #10 AWG CABLES. ADJUST WIRE SIZE FOR A MAXIMUM VOLTAGE DROP OF 3%.
- B. CONTRACTOR TO COORDINATE WITH ARCHITECT FOR EXACT HEIGHT OF OUTLETS.
- C. E.C. SHALL VERIFY ANY THIRD PARTY INSPECTION REQUIRED BY THE LOCAL JURISDICTION PRIOR TO BIDDING THIS PROJECT.
- D. ALL LOW VOLTAGE WIRING TO BE IN CONDUIT U.N.D BY A.H.J.
- E. E.C. TO COORDINATE WITH MECHANICAL CONTRACTOR FOR MECHANICAL EQUIPMENTS, ITS SENSORS AND THERMOSTAT LOCATION.





COMcheck Software Version COMcheckWeb
Interior Lighting Compliance Certificate

Project Information

Energy Code: 90.1 (2019) Standard
Project Title: 1 WEST FOREST AVENUE
Project Type: Alteration

Owner/Agent: Designer/Contractor:

Allowed Interior Lighting Power

A Area Category	B Floor Area (ft ²)	C Allowed Watts / ft ²	D Allowed Watts
1-Retail	2670	0.84	2243

Total Allowed Watts = 2243

Proposed Interior Lighting Power

A Fixture ID : Description / Lamp / Wattage Per Lamp / Ballast	B Lamps/ Fixture	C # of Fixture	D Fluxure Watt.	E (C X D)
Retail (2670 sq.ft.)				
LED: A: 1'X4' LIGHT FIXTURE: Other:	1	34	45	1530
LED: B: SURFACE MOUNT CEILING LIGHT FIX: Other:	1	9	75	675
LED: C: CHANDLIER DECORATIVE CANDELABR: Other:	1	4	150	Exempt
Exemption: Lighting Sales or Educational Demonstration Systems				
LED: D: PENDANT LIGHT FIXTURE: Other:	1	3	75	Exempt
Exemption: Lighting Sales or Educational Demonstration Systems				
LED: E: UNDER CABINET STRIP LIGHTING: Other:	1	15	2	30

Total Proposed Watts = 2235

Interior Lighting PASSES

Interior Lighting Compliance Statement

Compliance Statement: The proposed interior lighting alteration project represented in this document is consistent with the building plans, specifications, and other calculations submitted with this permit application. The proposed interior lighting systems have been designed to meet the 90.1 (2019) Standard requirements in COMcheck Version COMcheckWeb and to comply with any applicable mandatory requirements listed in the Inspection Checklist.

Name - Title: Signature: Date:

Project Title: 1 WEST FOREST AVENUE
Data Filename: Report date: 11/09/25
Page 1 of 4

PANEL: A(N)										MOUNTING:		REFER TO EL. POWER PLAN (EL. SHEET E3D)			
208Y/120 VOLTS, 3 PHASE, 4 WIRE										PANEL LOCATION:		REFER TO EL. POWER PLAN (EL. SHEET E3D)			
MAIN CB 400A, MLO: N/A, BUS: 400A, MIN, FED FROM: REFER TO EL. RISER DIG. (EL. SHEET E3D)															
NOTE: L: LIGHTING, R: RECEPTACLES, H: HVAC LOAD, M: MOTOR LOAD, E: EQUIPMENTS, O: OTHER/MISC. (TYPICAL)															
CKT NO.	TRIP AMPS	DESCRIPTION OF LOAD	LOAD TYPE	LOAD (KVA)	MINIMUM BRANCH CIRCUIT	PER PHASE (KVA)			MINIMUM BRANCH CIRCUIT	LOAD (KVA)	LOAD TYPE	DESCRIPTION OF LOAD	TRIP AMPS	CKT NO.	
						A	B	B							
1	20	LIGHTING-MANUFACTURING	L	1.00	2#12, #12G, 3/4" C	2.20			2#12, #12G, 3/4" C	1.20	E	DISHWASHER	20	2	
3	20	LIGHTING- SALES/CIGAR LOUNGE & STORAGE CLOSET	L	1.30	2#12, #12G, 3/4" C	2.40			2#12, #12G, 3/4" C	1.10	E	MICROWAVE	20	4	
5	20	LIGHTING- PHOTO/VIDEO SUITE & OFFICE 1, 2 & 3	L	0.79	2#12, #12G, 3/4" C		1.99		2#12, #12G, 3/4" C	1.20	E	REFRIGERATOR	20	6	
7	20	BUILDING SIGNAGE	L	1.00	2#12, #12G, 3/4" C	2.87			2#12, #12G, 3/4" C	1.87	E	AUTOMATIC L-BAR SEALER	30/2P	8	
9	20	RECEPTACLE - DISPLAY LIGHTING	R	1.00	2#12, #12G, 3/4" C	2.87		7.11	2#12, #12G, 3/4" C	1.87	E			10	
11	20	RECEPTACLE - ENGRAVING MACHINE	R	1.00	2#12, #12G, 3/4" C					6.12	H			12	
13	20	RECEPTACLE - CIGAR AIR PUMP	R	1.00	2#12, #12G, 3/4" C	7.12			3#4, 1#8G, 1" C	6.12	H	HP-1(N) DISCONNECT-1	80/3P	14	
15	20	RECEPTACLE - WORK STATION	R	1.08	2#12, #12G, 3/4" C		7.22			6.12	H			16	
17	20	RECEPTACLE - MANUFACTURING	R	1.08	2#12, #12G, 3/4" C			7.22		6.12	H			18	
19	20	RECEPTACLE - PROJECTOR/TV	R	0.36	2#12, #12G, 3/4" C	6.48			3#4, 1#8G, 1" C	6.12	H	HP-1(N) DISCONNECT-2	80/3P	20	
21	20	RECEPTACLE - CIGAR HUMIDOR CASE	R	1.08	2#12, #12G, 3/4" C			0.74		6.12	H			22	
23	20	RECEPTACLE - LOW VOLTAGE/SECURITY	R	0.72	2#12, #12G, 3/4" C				2#12, #12G, 3/4" C	0.02	H	AC-1(N)	15/2P	24	
25	20	RECEPTACLE - UNDER COUNTER USB	R	1.08	2#12, #12G, 3/4" C	1.10				0.02	H			26	
27	20	GARBAGE DISPOSAL	E	0.78	2#12, #12G, 3/4" C	0.80				0.02	H	AC-2(N)	15/2P	28	
29	20	RECEPTACLE - COUNTER TOP	R	0.54	2#12, #12G, 3/4" C		0.56			0.02	H			30	
31	20	RECEPTACLE - CORRIDOR	R	1.26	2#12, #12G, 3/4" C	1.44				0.02	H	AC-3(N)	15/2P	32	
33	20	RECEPTACLE - OFFICE 1	R	0.72	2#12, #12G, 3/4" C		0.74			0.02	H			34	
35	20	RECEPTACLE - OFFICE 2	R	0.72	2#12, #12G, 3/4" C			0.74		0.02	H	AC-4(N)	15/2P	36	
37	20	RECEPTACLE - OFFICE 3	R	0.72	2#12, #12G, 3/4" C			0.74		0.02	H			38	
39	20	RECEPTACLE - SALES/CIGAR LOUNGE & JANITOR CLOSET	R	0.54	2#12, #12G, 3/4" C		0.56			0.02	H	AC-5(N)	15/2P	40	
41	20	RECEPTACLE - PHOTO/VIDEO SUITE 1	R	0.72	2#12, #12G, 3/4" C			0.74		0.02	H			42	
43	20	RECEPTACLE - PHOTO/VIDEO SUITE 2	R	0.72	2#12, #12G, 3/4" C		0.85			0.13	H	AC-6(N)	15/2P	44	
45	15	ESE-1(N)	H	0.39	2#12, #12G, 3/4" C		0.52			0.13	H			46	
47	15	ESE-2(N)	H	0.39	2#12, #12G, 3/4" C			0.74		0.35	H			48	
49	15	HHS-1(N)	H	0.62	2#12, #12G, 3/4" C		0.85			0.35	H	AC-7(N)	15/2P	50	
51	15	HHS-2(N)	H	0.56	2#12, #12G, 3/4" C		0.85			0.35	H			52	
53	20/2P	OAF-1(N)	M	0.62	2#12, #12G, 3/4" C			0.98		6.59	H	AC-8(N)	15/2P	54	
55	20/2P	OAF-1(N)	M	0.62	2#12, #12G, 3/4" C		7.22			6.59	H			56	
57	20/2P	EF-1(N)	M	0.62	2#12, #12G, 3/4" C			7.22		3#4, 1#8G, 1" C	6.59	H	EDH-1(N)	70/3P	58
59	20/2P	EF-1(N)	M	0.62	2#12, #12G, 3/4" C			7.22		6.59	H			60	
61	20	RECEPTACLE - EXTERIOR	R	0.18	2#12, #12G, 3/4" C	0.68				2#12, #12G, 3/4" C	0.50	M	MOTORISED DAMPERS	20	62
63	20/2P	CONVEYER BELT	E	0.95	2#12, #12G, 3/4" C		0.05						SPACE	20	64
65	20	SPARE						0.05					SPACE	20	66
67	20	SPARE						0.00					SPACE	68	
69	20	SPARE						0.00					SPACE	70	
71	20	SPARE						0.00					SPACE	72	
TOTAL CONNECTED LOAD (KVA)						31.41	30.43	28.10							
LOAD CLASSIFICATION			CONNECTED LOAD (KVA)			DEMAND FACTOR			DEMAND LOAD (KVA)			PANEL TOTAL LOAD			
TOTAL LIGHTING			4.09			125%			5.11						
TOTAL RECEPTACLE			14.52			100%			14.52			TOTAL CONNECTED LOAD			
TOTAL HVAC			60.22			100%			60.22			TOTAL DEMAND LOAD			
TOTAL MOTOR			3.00			100%			3.00			TOTAL CONNECTED CURRENT			
TOTAL KITCHEN/EQUIPMENTS			8.11			100%			8.11			TOTAL DEMAND CURRENT			
TOTAL OTHER/MISCELLANEOUS			0.00			100%			0.00			SYSTEM VOLTAGE			
												120/208V			